

CELO



FORCE ONE



The powerful, lightweigt and ergonomic gas nailer



CELO

Gas nailer

FORCE ONE

The best gas nailer in its class
- with extensive range of accessories



Main features / Advantages



Powerful

Setting energy of 105 Joule for high fastening quality (steel thickness up to 5 mm)



Constant power

Consistent gas injection regardless of temperature



Long lasting battery

up to 4500 fastenings per charge



Versatile

nails from 13 to 38 mm length for many different applications



Short contact pressure

enables fatigue-free working, especially with overhead installation



Quick

up to 2.5 nails per second



Good accessibility

even in narrow places due to the slim design and the extended nose



Lightweight

with only 3,6 kg including battery the FORCE ONE is the lightest gas nailer in its class



Highly effective dust protection

Clever filter systems at the suction and discharge openings



Ergonomic handle

relieves the hands during longer use



Very well balanced

due to the special positioning of the gas cartridge



Smart

Computer-controlled intelligent ventilator adapts to the environment



Simple and fast adjustable tool nose



Removable

magazine footer



Laterally adjustable

device hook



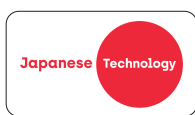
LED display

prevents unexpected work interruptions in case the battery is low

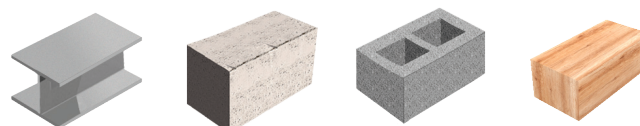
Gas nailer FORCE ONE



Advantages, approvals and certificates



Suitable building materials



Versatile use in different base materials such as steel, concrete, solid bricks and limited in wood. Can be used on floors, walls and ceilings.

Applications

Electrical Installations

Fastening of various light electrical installations [cables, conduits, cable channels, lamp suspensions etc.]

HVAC sector


Fixing of heating pipes, ventilation channels etc.

Drywall construction

Fastening of drywall profiles


On the façade / tunnel construction / motorways

Fastening of insulating mats, moisture-repellent foils, protective material for floor coverings, fleece




You save money

Direct mounting
= You save between
15 ct and 1 €
per fixing!




You save time


Increased
productivity
= more construction
sites in the
same time!



FORCE ONE



With the gas nailer FORCE ONE every fastening is done within seconds.
→ **Per fixing point you save on average 90% of your working time!**



The gas nailer FORCE ONE pays off quickly.
→ **After approx. 2000 fixings your investment pays off and you earn money with every fixing!**

Set includes

- 1 x Gas nailer FORCE ONE
- 1 x Safety glasses
- 2 x Ear plugs
- 2 x Battery
- 1 x Charger
- 1 x Carrying case
- 1 x Jam clear tool
- 1 x Instruction manual



Gas nailer FORCE ONE

Type	Art-No	[Set]	[pcs]
FORCE ONE with magazine for 20 nails	FONE20	1	-
FORCE ONE with magazine for 40 nails	FONE40	1	-



Battery and charger for gas nailer FORCE ONE

Type	Art-No	[pcs]	[pcs]
FORCE ONE Battery	FONEBAT	1	-
FORCE ONE Charger	FONECAR	1	-



High-performance gas for gas nailer FORCE ONE



Type	Art-No	Height [mm]	Content [ml]	[pcs]	[pcs]
Fuel cell*	9GASFONE	180	80	1	20

* sufficient for min. 800 nails

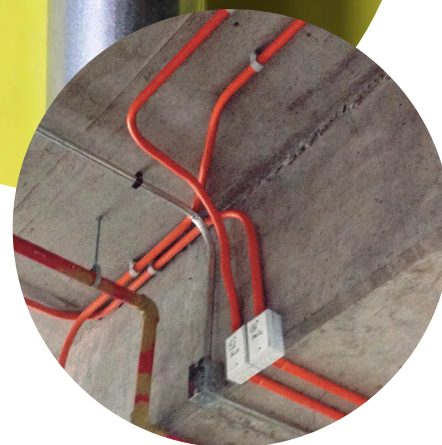
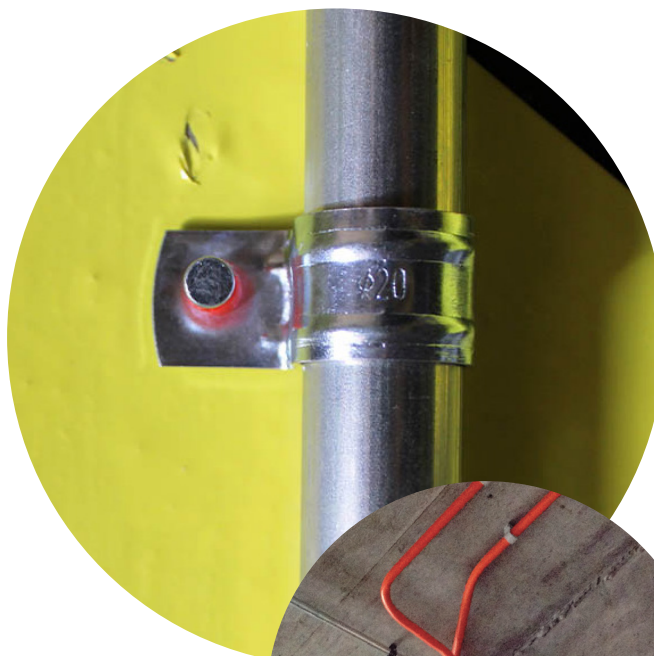
Technical data of gas nailer FORCE ONE

Characteristics	Technical data
Height	365 mm
Width	124 mm
Length	334 mm
Weight	3.6 Kg (with battery included)
Loading capacity	FORCE ONE 20: 20 + 2 nails* FORCE ONE 40: 40 + 2 nails*
Type of battery	NiMH-battery (battery lasts for 4.500 nails)

Characteristics	Technical data
Capacity of battery	6V DC, 1.5Ah
Power consumption (Rated output)	8VA (10V 800mA)
Connection charger	100-240V AC. (50 or 60Hz)
Charging time	max. 120 minutes
Temperature range for use	-10°C to +40°C

* There must be at least 2 nails in the magazine, otherwise the nailer cannot be triggered.

Steel nails FORCE ONE XHA & TKA



Advantages



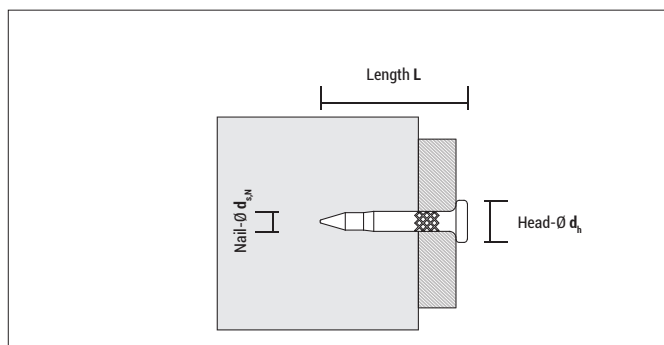
XHA premium nails for gas nailer FORCE ONE



TKA standard nails for gas nailer FORCE ONE

- XHA:
 - Premium nails; suitable for hard concrete and steel
 - Grooved nails to improve grip
- TKA: standard nails for concrete and solid bricks
- Each box includes one high-performance fuel cell, sufficient for 800 nails

Mounting



Approvals and certificates



XHA premium nails

+ each box includes one high-performance fuel cell



Type	Art-No	Nail-Ø $d_{s,N}$ [mm]	Length L [mm]	Head-Ø d_h [mm]	[pcs]	[pcs]
XHA premium nails 13 mm + Fuel cell	913800XHA	3	13	6,3	800	4.000
XHA premium nails 17 mm + Fuel cell	917800XHA	3	17	6,3	800	4.000
XHA premium nails 22 mm + Fuel cell	922800XHA	3	22	6,3	800	4.000
XHA premium nails 27 mm + Fuel cell	927800XHA	3	27	6,3	800	4.000
XHA premium nails 32 mm + Fuel cell	932800XHA	3	32	6,3	800	4.000
XHA premium nails 38 mm + Fuel cell	938800XHA	3	38	6,3	800	4.000



+ each box includes one high-performance fuel cell

TKA standard nails

Type	Art-No	Nail-Ø d _{s,N} [mm]	Length L [mm]	Head-Ø d _h [mm]	[pcs]	[pcs]
TKA nails 19 mm + Fuel cell	919800TKA	2,6	19	6,3	800	4.000
TKA nails 25 mm + Fuel cell	925800TKA	2,6	25	6,3	800	4.000

Overview - Suitable building materials for nails XHA and TKA

	XHA 13 mm	XHA 17 mm	TKA 19 mm	XHA 22 mm	TKA 25 mm	XHA 27 mm	XHA 32 mm	XHA 38 mm
Steel	●							
Concrete > C20/25		●		○				
Concrete C20/25		○	●	●	●	○		
Solid brick		○	●	●	●	●	○	
Hollow brick					●	●	●	
Wood								●

● very suitable ○ suitable to a limited extent

Overview over FORCE ONE accessories



Multidiameter nylon clamp Abranyl®**ABT**



Conduit clip **FT**



Pipe ring clip **UT**



Metal conduit clip **PFT & DFT**



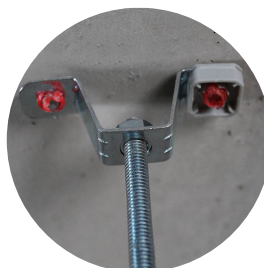
Nylon clip for flat cables **TPC & TPLC**



Stud accessory **ATR M6 & ATR M8**



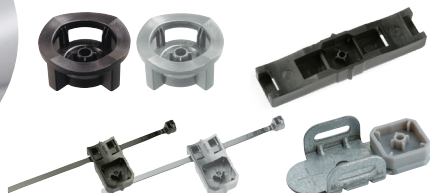
Wire conduit **WSC & WDC**



Rod hanger **ATV**



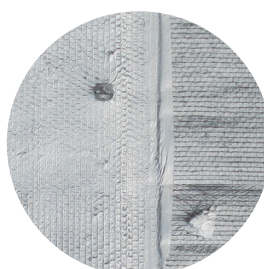
Cable tie fasteners **TBB, TBBL, TBBD, TBM**



Ceiling hanger **AAT**



Conduit clips **FP & FPD**



Metal washer **AW**



Compatibility FORCE ONE accessories with different gas nailers

CELO FORCE ONE Accessories		CELO		HILTI		POWERS	DEWALT		SPIT	WÜRTH
		FORCE ONE	AG II	GX-3	BX-3	TRAK IT® C3	TRAK IT® C5	DCN890	800E	DIGA CS2
ABT grey		✓	✓	✓	✓	✓	✓	✓	✓	✓
ABT black		✓	✓	✓	✓	✓	✓	✓	✓	✓
ABT white		✓	✓	✓	✓	✓	✓	✓	✓	✓
UT		✓	✓			✓			✓	
TPC		✓	✓			✓			✓	
TPLC		✓	✓			✓			✓	
WSC		✓	✓			✓			✓	
WDC		✓	✓			✓			✓	
TBB black FORCE ONE		✓	✓			✓			✓	
TBB grey FORCE ONE		✓	✓			✓			✓	
TBB grey				✓	✓	✓	✓	✓	✓	✓
TBBL black		✓	✓			✓			✓	
TBBL grey		✓	✓			✓			✓	
TBBD		✓	✓			✓			✓	
TBM		✓	✓			✓			✓	
FP		✓	✓	✓	✓	✓	✓	✓	✓	✓
FPD		✓	✓	✓	✓	✓	✓	✓	✓	✓
FT		✓	✓	✓	✓	✓	✓	✓	✓	✓
PFT		✓	✓	✓	✓	✓			✓	
DFT		✓	✓	✓	✓	✓			✓	
ATR M6		✓	✓			✓			✓	
ATR M8		✓	✓			✓			✓	
ATV 4, 5, 6		✓	✓			✓			✓	
ATV 8		✓	✓			✓			✓	
ATVS 8		✓	✓			✓			✓	
AAT		✓	✓			✓			✓	
AW		✓	✓			✓			✓	

FORCE ONE Accessories



Multidiameter nylon clamp Abranyl® ABT

Type Ø	Art-No			Pipe-Ø				[pcs]	[pcs]
	grey	black	white	Metric [mm]	Copper [mm]	Steel [Inch]	Plastic [mm]		
ABT 14/18	918ABT	9418ABT	9118ABT	16	14-15-18	3/8"	16	100	600
ABT 20/25	925ABT	9425ABT	9125ABT	20-25	22	1/2"	20-25	50	450
ABT 25/32	932ABT	9432ABT	9132ABT	32	28	3/4"	32	50	300
ABT 35/42	942ABT	9442ABT	9142ABT	40	35-42	1"-1/4"	40-42	25	150



Pipe ring clip UT

Type	Art-No	Pipe-Ø Plastic [mm]	[pcs]	[pcs]
UT 16	916UT	16	100	900
UT 20	920UT	20	100	900
UT 25	925UT	25	100	900
UT 32	932UT	32	50	450
UT 40	940UT	40	50	300



Nylon clip for flat cables TPC, TPLC

Type	Art-No	For cable-Ø [mm]	Length L [mm]	Width W [mm]	Height H [mm]	[pcs]	[pcs]
TPC 6x17	9TPC	6x15	44,0	22,0	7,5	100	900
TPLC 9x25	9TPLC	9x25	64,5	30,0	10,5	100	900



Wire conduit WSC / WDC

Type	Art-No	Length L [mm]	Width W [mm]	Height H [mm]	[pcs]	[pcs]
WSC	9WSC	128	20	17	100	900
WDC	9WDC	232	20	17	50	450

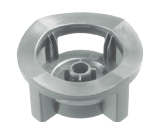


Find our wide range of cable ties on our website at www.celofixings.com



Cable tie fasteners TBB for FORCE ONE

Type	Art-No	Height [mm]	Diameter Ø [mm]	[pcs]	[pcs]
TBB black	9TBB	13	27,5	100	1.200
TBB grey	9GRTBB	13	27,5	100	1.200



Cable tie fasteners TBB

Type	Art-No	Height [mm]	Diameter Ø [mm]	[pcs]	[pcs]
TBB grey	9NTBB	13	27,5	100	1.200



Cable tie fasteners TBBL

Type	Art-No	[pcs]	[pcs]
TBBL black	94TBBL	200	900
TBBL grey	9TBBL	200	900

Each box includes 200 pcs cable tie 4,8 x 288

FORCE ONE Accessories



Find our wide range of cable ties on our website at www.celofixings.com



Cable tie fasteners TBBD

Type	Art-No	Length L [mm]	Width W [mm]	Height H [mm]	[pcs]	[pcs]
TBBD	9TBBD	80,0	18,0	9,5	100	600



Cable tie fasteners TBM

Type	Art-No	Length L [mm]	Width W [mm]	Height H [mm]	Clearance hole Ø [mm]	[pcs]	[pcs]
TBM	9TBM	53	25	14	6	100	900





Conduit clips FPD

Type	Art-No	Copper [mm]	Pipe-Ø Steel [Inch]	Plastic [mm]	Pipe sizes [mm]	Length L [mm]	Width W [mm]	Height H [mm]	[pcs]	[pcs]
FPD 16	916FPD	18	3/8"	16	16 - 19	59	20	19,5	100	900
FPD 20	920FPD	22	1/2"	20	20 - 23	68	20	23,8	50	450
FPD 25	925FPD	28	3/4"	25	25 - 28	81	20	29	50	450





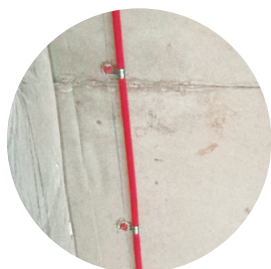
Conduit clips FP

Type	Art-No	Pipe-Ø				Length L [mm]	Width W [mm]	 [pcs]	 [pcs]
		Metric [mm]	Steel [Inch]	Copper [mm]	Plastic [mm]				
FP 16	916FP	16	-	-	16	41,5	23	100	900
FP 18	918FP	-	3/8"	18	-	43,5	23	100	900
FP 20	920FP	20	-	-	20	45,5	23	100	600
FP 22	922FP	-	1/2"	22	-	47,5	23	100	600
FP 25	925FP	25	-	-	25	50,5	23	100	600
FP 28	928FP	-	3/4"	28	-	53,5	23	100	600
FP 32	932FP	32	-	-	32	57,5	23	50	450





Conduit clip FT

Type	Art-No	Pipe-Ø				 [pcs]	 [pcs]
		Metric [mm]	Copper [mm]	Steel [inch]	Plastic [mm]		
FT 16	916FT	16	-	-	16	100	1.800
FT 18	918FT	-	18	3/8"	-	100	900
FT 20	920FT	20	-	-	20	100	900
FT 22	922FT	-	22	1/2"	-	100	900
FT 25	925FT	25	-	1/8"	25	100	900
FT 28	928FT	-	28	-	-	100	900
FT 32	932FT	-	-	-	32	100	900



Metal conduit clip PFT

Type	Art-No	Pipe-Ø		 [pcs]	 [pcs]
		Copper [mm]	Steel [mm]		
PFT 5	95PFT	5	-	100	1.800
PFT 6	96PFT	6	-	100	1.800
PFT 7	97PFT	7	-	100	1.800
PFT 8	98PFT	8	-	100	1.800
PFT 10	910PFT	10	1/8"	100	1.800
PFT 12	912PFT	12	-	100	1.800
PFT 14	914PFT	14	-	100	900

FORCE ONE Accessories



Metal conduit clip DFT



Type	Art-No	Pipe-Ø		[pcs]	[pcs]
		Copper [mm]	Steel [mm]		
DFT 5	95DFT	5	–	100	1.800
DFT 6	96DFT	6	–	100	1.800
DFT 7	97DFT	7	–	100	1.800
DFT 8	98DFT	8	–	100	900
DFT 10	910DFT	10	1/8"	100	900
DFT 12	912DFT	12	–	100	900



Stud accessory ATR



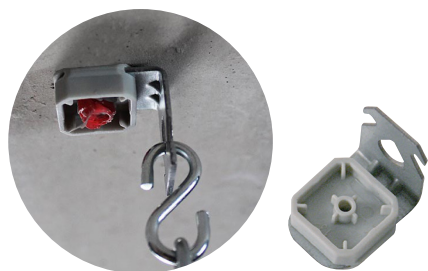
Type	Art-No	Dimensions Thread x Length	Number of fixing points	[pcs]	[pcs]
ATR 6	9TR6	M6x6,5	1	100	900
ATR 8C	9TR8C	M8x10	2	100	900
ATR 8L	9TR8L	M8x16	2	100	900





Rod hanger ATV, ATVS



Type	Art-No	Metric thread	[pcs]	[pcs]
ATV4	9TV4	M4	100	600
ATV5	9TV5	M5	100	600
ATV6	9TV6	M6	100	600
ATV8	9TV8	M8	50	450
ATVS8	9TVS8	M8	50	450





Ceiling hanger AAT

Type	Art-No	Height H [mm]	Length L [mm]	Width W [mm]	 [pcs]	 [pcs]
AAT	9AAT	27	26	19	100	900





Metal washer AW

Type	Art-No	Diameter Ø [mm]	 [pcs]	 [pcs]
AW 15	915AW	15	200	3.600
AW 25	925AW	25	200	3.600



Punched metal tape Cintapolo CA

Type	Art-No	Width W [mm]	Clearance hole-Ø d _r [mm]	Distance of holes S [mm]	Tensional strength ≤ [kg]	 [Stück]	 [Stück]
Cintapolo 12	12CA	12	5,1	14	50	10	-
Cintapolo 17	CA	17	7	20	95	10	-



CELO Befestigungssysteme GmbH
Industriestraße 6
D-86551 Aichach
www.celofixings.com
Hotline: +49 (0) 8251-90485-0
Telefax: +49 (0) 8251-90485-49
E-mail: info@celofixings.de

Small Things Matter

Presented by:



EN 07/20

Technical products and illustrations are subject to change. The reprint of this brochure, in part or in whole, is prohibited.
CELO Befestigungssysteme GmbH accepts no liability for the correctness of the information provided.