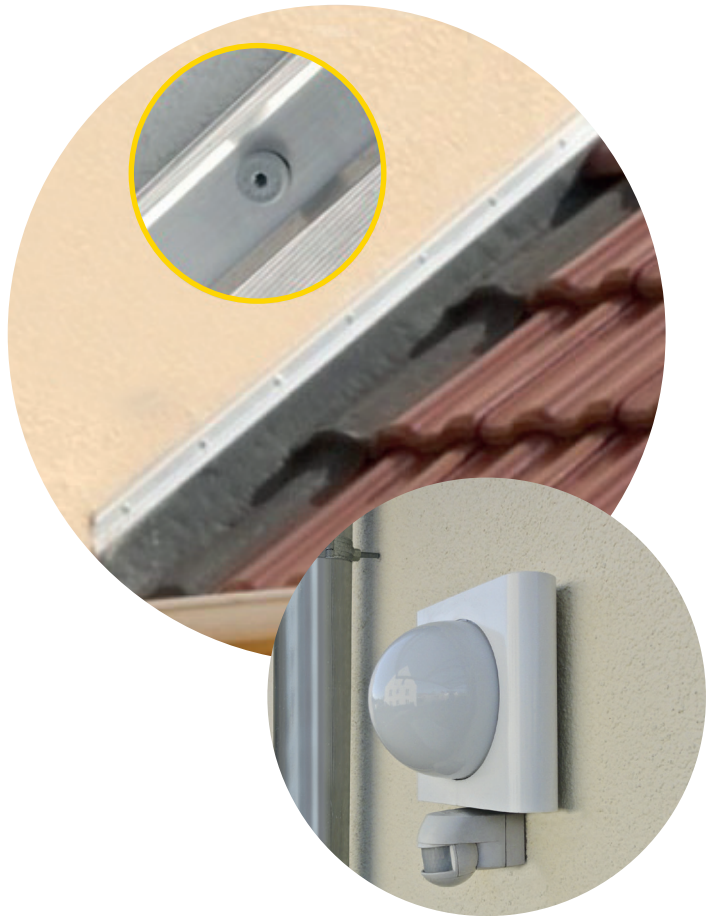


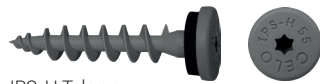
Insulation screw IPS-H



Advantages



IPS-H Signal white



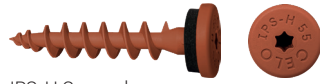
IPS-H Telegrey



IPS-H Anthracite grey



IPS-H Traffic black



IPS-H Copper brown



IPS-H Sepia brown



IPS-H Chocolate brown

- Special screw for direct fastening into wood fibre insulation boards and perimeter insulation panels - extremely fast and without thermal bridges!
- For fastening of wall connection profiles, metal sheets, base protection profiles, cornice covers, motion detectors, lamps, signs, etc. into the insulation material
- Length only 55 mm; therefore also perfectly suitable for small insulation thicknesses (from 60 mm)
- No pre-drilling in plaster (≤ 7 mm) due to sharp drilling tip
- Special screw made out of glass-fibre reinforced nylon with EPDM sealing; ageing, weather and UV-resistant
- Stylish flat head, different colors
- Suitable for clearance holes $\geq \varnothing 8$ mm (common for wall connection profiles)
- Suitable for light duty fixings in combination with a screw $\varnothing 3,5$ mm

Suitable building materials

Very suitable



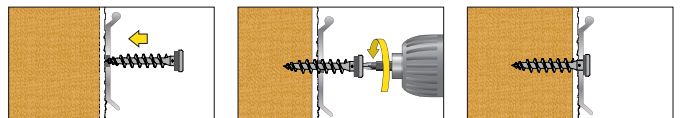
- Wood fibre boards
- Perimeter insulation panels

Approvals and certificates

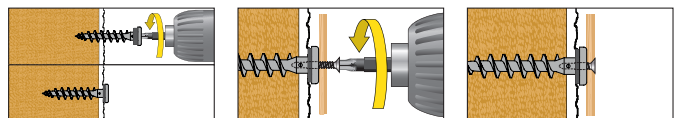


Mounting

Wall connection profiles

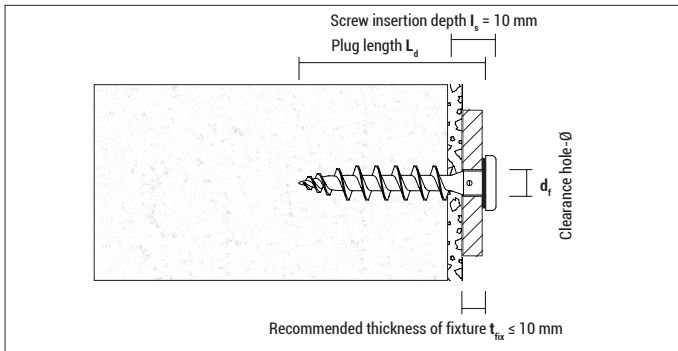


Light duty fixings with screw



Usable with: Screw $\varnothing 3,5$ mm;
Screw length $L_s = 10$ mm + Thickness of fixture

Insulation screw IPS-H



IPS-H with EPDM sealing, head-Ø = 16,0 mm

Type	Art-No	RAL-Code	L _d [mm]	Drive	d _r [mm]	€ / 100 pcs	[pcs]	[pcs]
IPS-H Signal white	9155IPSH	RAL 9003	55	TX 25	8 – 10		50	1.350
IPS-H Telegrey	9GR55IPSH	RAL 7045	55	TX 25	8 – 10		50	1.350
IPS-H Anthracite grey	9AN55IPSH	RAL 7016	55	TX 25	8 – 10		50	1.350
IPS-H Traffic black	9455IPSH	RAL 9017	55	TX 25	8 – 10		50	1.350
IPS-H Copper brown	9CO55IPSH	RAL 8004	55	TX 25	8 – 10		50	1.350
IPS-H Sepia brown	9M55IPSH	RAL 8014	55	TX 25	8 – 10		50	1.350
IPS-H Chocolate brown	9MO55IPSH	RAL 8017	55	TX 25	8 – 10		50	1.350

Loads and dimensions

Type	Applications in wood fibre insulation boards unplastered F _{rec} [kN]	Applications in wood fibre insulation boards plastered F _{rec} [kN]	Applications in Polystyrene XPS (perimeter insulation) F _{rec} [kN]	Thickness of insulation material ≥ [mm]
IPS-H	0,10*	ca. 0,12*	0,07*	60

F_{rec}: Recommended load in all directions incl. safety factor of 5

* Value may differ depending on the type and thickness of the plaster