

Insulation screw plug IPSD-H

Advantages



- Special screw plug for direct fastening into wood fibre insulation boards - extremely fast and without thermal bridges!
- For fastening of wall connection profiles, metal sheets, base protection profiles, cornice covers, motion detectors, lamps, signs, etc. into the insulation material
- To be used with plumber screws 4,5x25 mm
- Pre-drilling in plaster usually not necessary (≤ 7 mm) due to sharp drilling tip
- Length only 55 mm; therefore also perfectly suitable for small insulation thicknesses (from 60 mm)
- Suitable for clearance holes $\geq \varnothing 8$ mm (common for wall connection profiles)
- Made out of glass-fibre reinforced nylon



Approvals and certificates



Suitable building materials

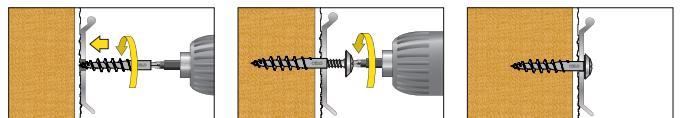
Very suitable



- Wood fibre boards
- Perimeter insulation panels

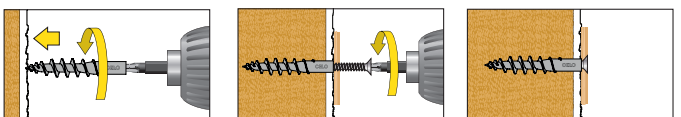
Mounting

Wall connection profiles



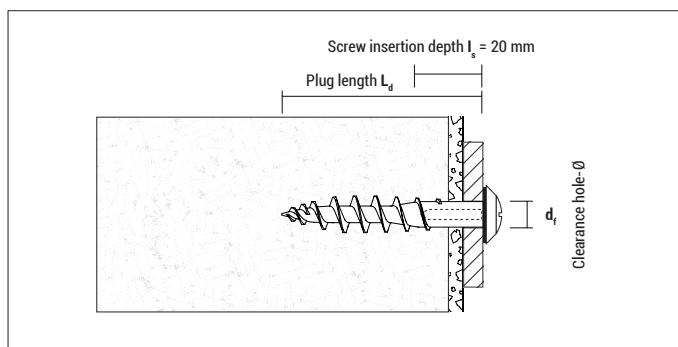
Recommended plumber screw: 4,5x25 mm

Light duty fixings with screw



Usable with: Screw $\varnothing 3,5$ mm;
Screw length $L_s = 10$ mm + Thickness of fixture

Insulation screw plug IPSD-H



IPSD-H

Type	Art-No	L_d [mm]	Drive	d_t [mm]	€ / 100 pcs	[pcs]	[pcs]
IPSD-H	9GR55IPSDH	55	TX 25	min. 8		50	1.350



Plumber screw PLS TX

Type $d_o \times L_s$	Art-No	Material	d_o [mm]	L_s [mm]	Drive	€ / 100 pcs	[pcs]	[pcs]
4,5 x 25	9X4525PLST	Stainless steel A2	4,5	25	TX 25		50	–
4,5 x 25	9XC04525PLST	Stainless steel A2, copper plated	4,5	25	TX 25		50	–

Expected delivery August 2020

Loads and dimensions

Type	Applications in wood fibre insulation boards unplastered F_{rec} [kN]	Applications in wood fibre insulation boards plastered F_{rec} [kN]	Applications in Polystyrene XPS [perimeter insulation] F_{rec} [kN]	Thickness of insulation material \geq [mm]
IPSD-H	0,1*	ca. 0,12*	0,07*	60

F_{rec} : Recommended load in all directions incl. safety factor of 5

* Value may differ depending on the type and thickness of the plaster