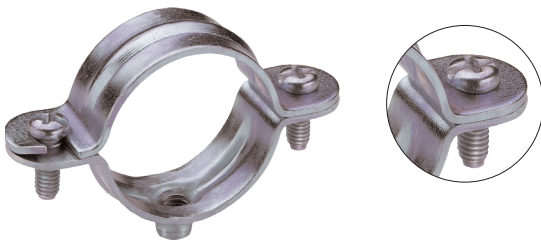
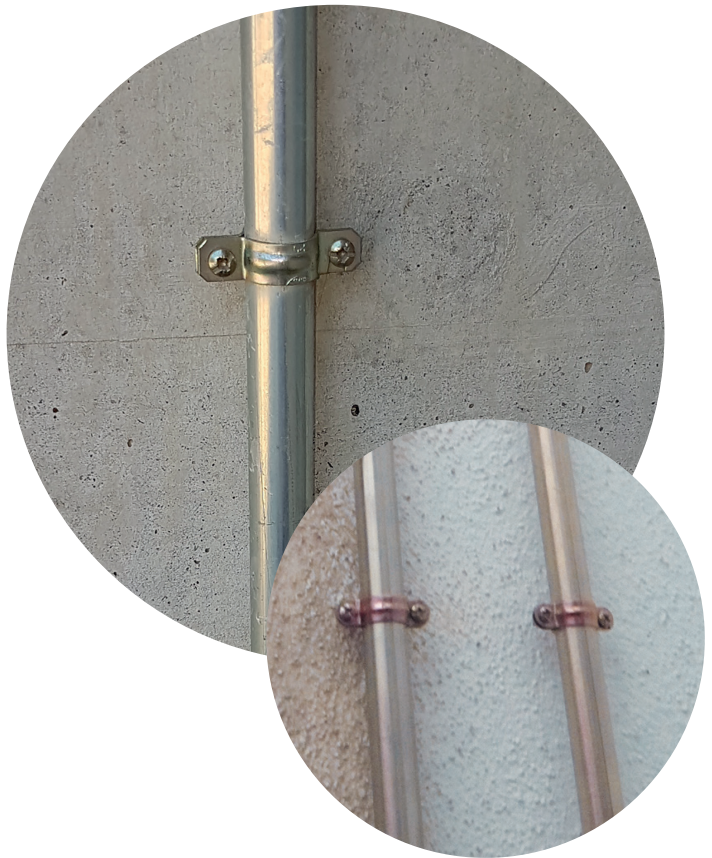


# Metal clamp

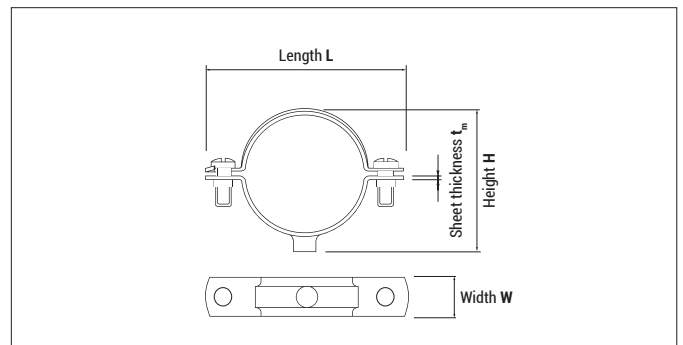
## Advantages



- Easy and quick installation
- With reinforcing ribs
- Connection thread: M6



## Mounting



**L M6**, M6 connecting thread

Type	Art-No	Pipe-Ø				Load* ≤ [Kg]	Sheet thickness t <sub>m</sub> [mm]	Length L [mm]	Height H [mm]	Clamp width W [mm]	€/100 pcs	[pcs]	[pcs]
		Metric [mm]	Copper [mm]	Steel [inch]	Plastic [mm]								
L 6	96L	–	6	–	–	50	1,2	31	13,7	11/12	100	1.800	
L 8	98L	–	8	–	–	50	1,2	33	15,5	11/12	100	1.800	
L 10	910L	–	10	1/8"	–	50	1,2	35	17,7	11/12	100	1.800	
L 12	912L	–	12	–	–	50	1,2	37	19,7	11/12	100	900	
L 14	914L	–	–	1/4"	–	50	1,2	39	21,7	11/12	100	900	
L 16	916L	16	–	–	16	50	1,2	41	23,7	11/12	100	900	
L 20	920L	20	–	–	20	50	1,2	45	27,2	11/12	100	900	
L 25	925L	25	–	–	25	50	1,2	51	32,2	11/12	100	900	
L 26	926L	–	–	3/4"	–	50	1,2	52	33,2	11/12	100	900	
L 32	932L	32	–	–	32	50	12,	57	39,2	11/12	50	450	
L 40	940L	40	–	–	40	50	1,2	66	47,2	11/12	50	450	
L 50	950L	50	–	–	50	50	1,2	78	56,7	12/14	25	225	
L 60	960L	–	–	2"	60	50	1,2	88	66,7	12/14	25	225	
L 63	963L	63	63	–	63	50	1,2	90	69,7	12/14	25	225	

\* Load incl. safety factor